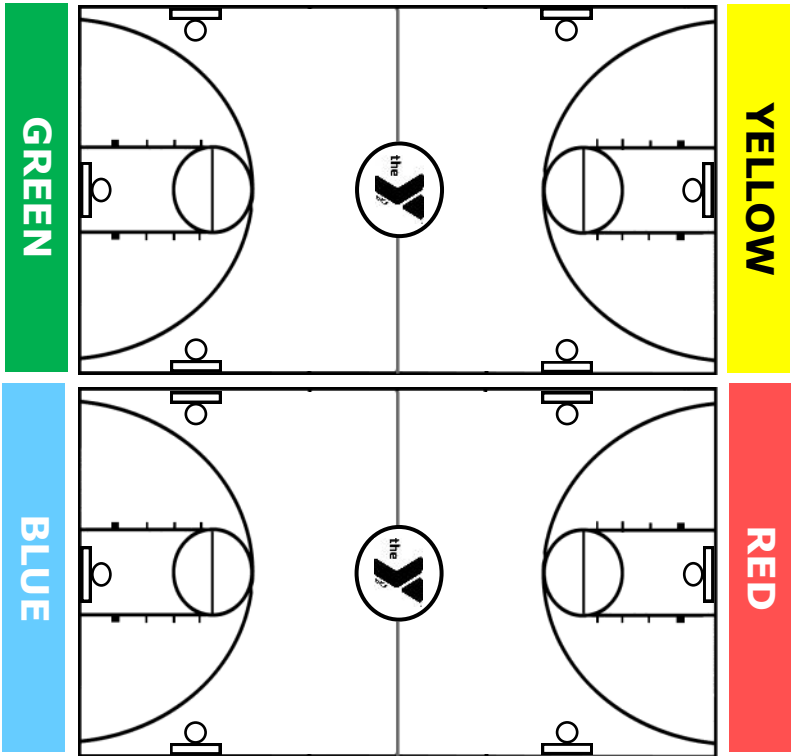




Gym Schedule

(February 2—March 16)

Mon	Tue	Wed	Thu	Fri	Sat	Sun
Open Gym 5:00a - 7:00a (1/4)* 7:00a - 8:00a (Full)	Open Gym 5:00a - 8:00a (Full)	Open Gym 5:00a - 7:00a (1/4)* 7:00a - 8:00a (Full)	Open Gym 5:00a - 8:00a (Full)	Open Gym 5:00a - 7:00a (1/4)* 7:00a - 8:00a (Full)	Valpo YMCA Opens 7am	Valpo YMCA Opens 11 am
Open Gym 8:00 - 11:00 (1/4)	Open Gym 8:00 - 10:30 (1/2)	Open Gym 8:00 - 11:00 (1/4)	Open Gym 8:00 - 10:30 (1/2)	Open Gym 8:00 - 11:00 (1/4)	Open Gym 7:00-8:45a (1/4 Blue)	
Preschool 8:00 - 10:55 (Yellow & Red)	Preschool 8:00 - 10:30 (Green & Yellow)	Preschool 8:00 - 10:55 (Yellow & Red)	Preschool 8:00 - 10:30 (Green & Yellow)	Preschool 8:00 - 10:55 (Yellow & Red)	Youth Basketball 7:30—8:45a (3/4)	Open Gym 11:00 - 2:00 (1/2)
Pickleball 8:00—11:00 (1/4)	Open Gym 10:30a - 3:00p (1/4)	Pickleball 8:00—11:00 (1/4)	Open Gym 10:30a - 3:00p (1/4)	Pickleball 8:00—11:00 (1/4)		
Open Gym 11:00 - 3:00 (Full)	Pickleball 10:30a - 3:00p (1/2) (Green/Yellow)	Open Gym 11:00—3:00 (Full)	Pickleball 10:30a - 1:30p (1/2) (G/Y)	Open Gym 11:00 -3:00 (Full)	Youth Basketball 8:45a—4:00p (Full) NO OPEN COURTS	Pickleball 11:00 - 2:00 (1/2) (Green/Yellow)
Adaptive Rec 3:00—4:00 (Blue & Red)			*Instructional Pickleball (1/4) 1:00—2:30			
Open Gym 3:00 - 5:00 (1/4)	Open Gym 3:00 - 5:00 (1/4)	Open Gym 3:00 - 5:00 (1/2)	Open Gym 3:00 - 5:00 (1/4)	Open Gym 3:00 - 5:00 (1/2)		
Preschool 3:00 - 5:00 (Yellow)	Preschool 3:00 - 5:00 (Yellow)	Preschool 3:00 - 5:00 (Yellow)	Preschool 3:00 - 5:00 (Yellow)	Preschool 3:00 - 5:00 (Yellow)	Open Gym 2:00—6:00p (Full)	
Afterschool 4:00 - 5:00 (Green)	Afterschool 4:00 - 5:00 (Green)	Afterschool 4:00 - 5:00 (Green)	Afterschool 4:00 - 5:00 (Green)	Afterschool 4:00 - 5:00 (Green)		
Open Gym 5:30—9:00p (1/2)	Open Gym 5:00 - 8:00 (Full)	Open Gym 5:00p - 10:00p (Full)	Open Gym 5:00p - 10:00p (Full)	Open Gym 5:00 - 8:00 (Full)		
Adult Men’s Basketball League 5:30—9:00p (Green/Yellow)	Open Gym 8:00-10:00p (1/2)			Open Gym 8:00-10:00p (1/2)	Valpo YMCA Closed After 6pm	Valpo YMCA Closed After 6pm
Open Gym 9:00—10:00p (Full)	COED Adult Volleyball 8:00 - 10:00p (Green & Yellow)			COED Adult Volleyball 8:00 - 10:00p (Green & Yellow)		



Courts not assigned on the schedule are OPEN.
Full court B-Ball will be permitted ONLY when space allows.
Schedule is subject to change without advance notice.

GYM RULES:

- No hanging on nets or rims.
- No foul language.
- No drinks, gum or food inside gym.
- Appropriate attire and footwear required at all times.
- Gym bags should be stored in a locker
- Please return all basketballs.

RESERVATIONS:

- *Pickleball will be using 1 court from 5:00 am to 7:00 am on Mondays, Wednesdays and Fridays
- *Instructional pickleball-please contact Kevin (Sport Director) for an appointment
- *Men's Full-court bball M,W,F from 5:30a-6:30a (1/2)
- Men's Adult Basketball League will run Mondays, 2/16 to 4/20 from 5:30—9:30 pm (1/2)